

CuroCell S.A.M.®

CuroCell S.A.M.® is a static air mattress which provides very good comfort, pressure and pain relief. It is used preventively and in the treatment of pressure ulcers up to and including category 2⁽¹⁾.

CuroCell S.A.M.® is delivered with a durable liquid resistant and vapour permeable⁽²⁾ hygienic cover, which is easy to clean and has a very well documented hygienic standard⁽³⁾.

(1) European Pressure Ulcer Advisory Panel, Quick reference guide 2009.

(2) SS-EN ISO 15496:2004, DIN 53.122.

(3) ISO 16603 "resistance of penetration by blood and body fluids", ISO 16604 "resistance of penetration by blood-borne pathogens", EN 14126, SS 876 00 19 "Health care textiles – Bacteria penetration – Wet".

Examination of the pressure relief capability and the shear force

(Berlin Cert, 02/09/09)



CuroCell S.A.M.® gets highest rate, "High Pressure Relief", and is 33 % better compared to the reference mattress (patient weight of 80 kg). Even at maximum load (200 kg) the average contact pressure is below 30 mmHg.

1. Pressure Area Index (PAI)	Patient weight of 80 kg	Patient weight of 200 kg
Below 30 mmHg	100 %	58 %
Below 20 mmHg	91 %	33 %
Below 10 mmHg	50 %	20 %

2. Examination of shear forces

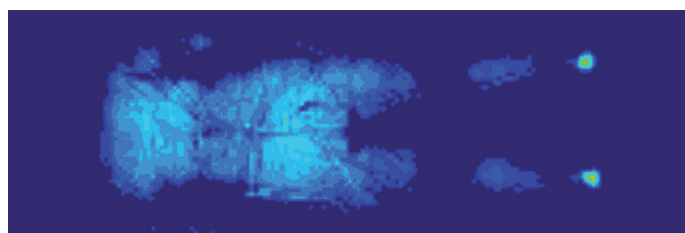
Maximum pulling force (Fmax)	181 N
Mean pulling force during slip-phase (Fquer)	177 N
Coefficient of sliding friction (µG)	0,72 ± 0,02
Horizontal stiffness (ΦH)	6,97 ± 0,12 N/mm

Comparative evaluation

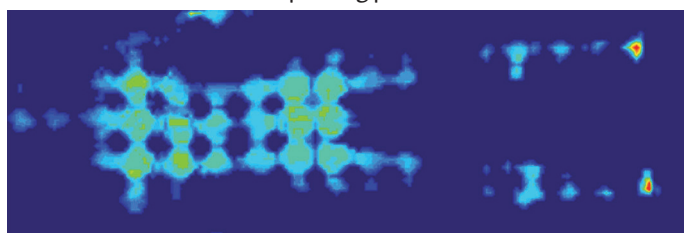
(Care of Sweden, 18/12/08)

This evaluation compares CuroCell S.A.M.® with other leading products on the Scandinavian market. It's performed with four different test persons, using the Xsensor pressure mapping system (X10). Results: CuroCell S.A.M.® is on average 19 % better than other products in the evaluation.

CuroCell S.A.M.®



Competeting product



Customer evaluating

(Care of Sweden, 01/05/09 to 17/03/10)

Care of Sweden's own customer survey of users and employees, show consistently good perceived comfort and function.

Patient's review (scale 1-5)

Comfort	4.47
Turn/Move on the mattress	4.26

Staff review (scale 1-5)

To work with the patient	4.36
To clean/make up/handle the mattress	4.33
To handle the pump/settings	4.52
To understand the instructions/user's manual	4.68
Fulfilled expectations	4.63