

# Clinical Evidence - Optimal 5zon®

## Pressure redistributing foam mattress

- Cost effective
- High density HR foam
- DuoCore® - Patented Sit function
- Designed to minimize shear and friction
- Maintenance-free
- Requires no adjustments



Optimal 5zon® is used in all types of health care environments for pain relief and as an aid in the prevention and treatment of pressure ulcers up to and including category 2<sup>(1)</sup>.

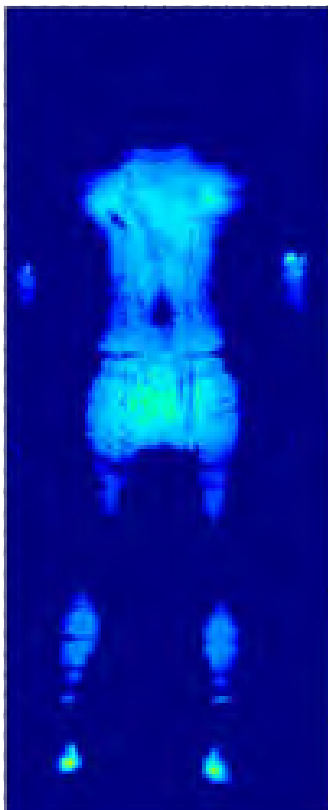
Optimal 5zon® is delivered with a durable liquid resistant and vapour permeable<sup>(2)</sup> hygienic cover, which is easy to clean and has a very well documented hygienic standard<sup>(3)</sup>.

(1) European Pressure Ulcer Advisory Panel, Quick reference guide 2009.

(2) SS-EN ISO 15496:2004, DIN 53.122.

(3) ISO 16603 "resistance of penetration by blood and body fluids", ISO 16604 "resistance of penetration by blood-borne pathogens", EN 14126, SS 876 00 19 "Health care textiles - Bacteria penetration - Wet".

Example of pressure mapping (Xsensor). Male, 90 kg, 178 cm.



Describes the characteristics of the device, it cannot directly predict clinical outcome.

## Examination of the pressure relief capability and the shear force (Berlin Cert, 02/09/09)



Optimal 5zon®/Optimal 5zon® BM gets highest rate, "High Pressure Relief", and is 32 % better compared to the reference mattress (patient weight of 80 kg). Even at maximum load (130 kg) the average contact pressure is below 30 mmHg.

1. Pressure Area Index (PAI)		Patient weight of 80 kg
Below 30 mmHg	100 %	96 %
Below 20 mmHg	96 %	62 %
Below 10 mmHg	51 %	31 %

2. Examination of shear forces	
Maximum pulling force (Fmax)	207 N
Mean pulling force during slip-phase (Fquer)	203 N
Coefficient of sliding friction (µG)	0,83 ± 0,01
Horizontal stiffness (H)	8,29 ± 0,60 N/mm

# Customers evaluation

## Patient's review (scale 1-5)

Comfort.....	4,04
Turn/Move on the mattress.....	4,04

## Staff review (scale 1-5)

To work with the patient.....	4,44
To clean/make up/handle the mattress.....	4,40
How well has the mattress fulfilled your expectations	4,44



 **care of sweden**  
Genuine Scandinavian Care

Care of Sweden AB, Box 146, SE-514 23 Tranemo, SWEDEN  
+46 (0)771 106 600 | [info@careofsweden.se](mailto:info@careofsweden.se) | [www.careofsweden.com](http://www.careofsweden.com)